



Piece of cloth from Prehistoric Peru. Design painted on cloth.



Beads.
Niz-Pee-



Tobacco smoking
Beadwork.

Dakota-Sioux - Band of porcupine quills used on leather shirt.

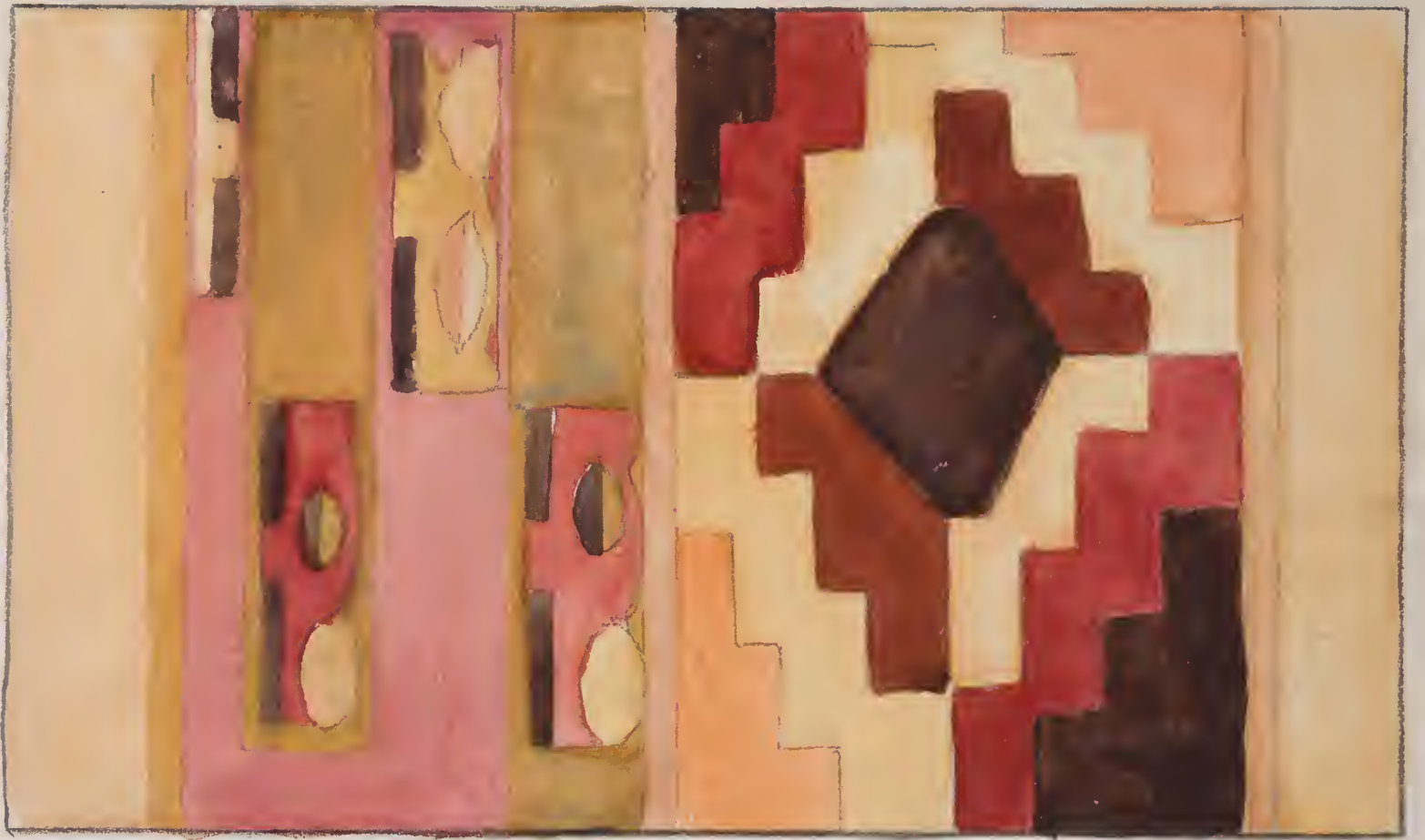


Beaded leggings





Fragment of cloth



fragment of cloth.



Border - fragment





Ribbon



Ribbon treatment



Blocks on ribbon



as high for head





Saddle
Bag
Seed
Decorations





LOP... 2... 11-11-1907



more part Russia



Margaret Reese

COPTIC TEXTILES · III-VII CENT. A.D.



Margaret Ruse